

2018

1

2015 10 20

2015 2310

2015 11 23

() 2017 11 23
2017 9 30 ()

1

2

3

4

5

6

7

8

9 2003 10 28

 2012 12 28

 2013 6 1

 2015 4 24

<

>

10 2013 3 15 6 1

11 2004 6 8 7 1

12 2014 7 7 8 8

13

14

/

15

16

17

18

19

20

21

22

23

24

25

26

27

28

29

3

30

31

32

5

15

33

34 T

35 $T+n$ T n (T) n

36

37

38

39

40

41

42

43

44

45

46

47

(

)

20%

48

49

50

51

52

53

54 A

A

55 C C

56

57

			/
			MBA EMPACC
			EMBA 2002
			()
1			

2

3

			EMBA

			2001
			<p>CIM Investors Group Financial Services Co. Ltd 2002</p> <p>LOF</p>

4

		2016 12 7	
		2016 12 12	3
			2016 5

		2017 7 28	2013 LOF
		2015 12 15 2016 12 22	
		2017 1 25	

5

	LOF
	500

	100
	LOF)
	FOF LOF LOF
	LOF LOF
1	
2	2017 12 11

1

2

3

4

5

6

7

8

9

10

11

12

1

2

1

2

3

4

5

6

7

8

3

1

2

3

4

1

1

9

10

11

3

1

2

3

4

5

4

5

1

2

3

4

5

6

7

8

6

1

2

()

1.

2

2

1996 2 7

2004 101

28,365,585,227

010-58560666

2010 2 3 2009

2009

2010 10 2009

2011 12 CFCA 40

2011 2011

2009 2010

2012 6 20 ,

2011-2012 2012

2010

2012 11 29 The Asset 2012 AAA

-

2013 ,

21

2013 PE/VC

2013

21 2013

2013 2013

2013

2013

2013

2013

2014

2014

2014

2014

21

2015

2015

2015

EUROMONEY 2015

2015

2015

2015

2014-2015

2

3

2004 7 9

64

36 100%

80%

100%

2017

9 30

179

4100.94

2007

2010

21

()

(1)

(2)

(3)

(4)

(5)

(1)

(2)

(3)

(4)

(5)

(6)

(1)

(2)

(3)

(4)

(5)

(6)

()

1	
	68 9
	68 9
021-61009916	021-61009917
400-700-5566	www.cxfund.com.cn
2	
1	
	55

12	
12	
021-61618888	021-63604199
95528	www.spdb.com.cn
6	
1099	
1099	
0755-22166118	0755-25841098
95511-3	bank.pingan.com
7	
8	
8	
027-65799999	027-85481900
95579 4008-888-999	www.95579.com
8	
115 20	
115 18	
0755-23838751	0755-25831754
95358	www.firstcapital.com.cn
9	
5	
5	
0512-62938521	0512-65588021
400 860 1555	www.dwzq.com.cn
10	
1508	
1508	
021-22169999	021-22169134
95525	www.ebscn.com
11	
157 7 8	

157		7 10	
0591-87383623		0591-87383610	
96326		0591	
		www.hfzq.com.cn	
12			
		3 9 10	
		3 9 10	
010-84183389		010-84183311-3389	
400-818-8118		www.guodu.com	
13			
95			
95			
028-86690057 028-86690058		028-86690126	
95310		www.gjzq.com.cn	
14			
88			
88			
0791-86283080		0791-86288690	
4008-222-111		www.gsstock.com	
15			
618			
		168 29	
95521		021-38670666	
4008888666		www.gtja.com	
16			
1012			
1012			
0755-82130833		0755-82133952	
95536		www.guosen.com	
17			
198			
959 B1			

0551-5161666	0551-5161600
96518 400-80-96518	www.hazq.com
18	
	638 21
	638
0931-4890208	0931-4890628



027-87618882	027-87618863
028-86711410	www.tfzq.com

95558	www.citics.com
30	
6009	29
6009	29
0755-83734659	0755-82960582

36			
685	37	4	449
1118		903-906	
021-58870011		021-68596916	
4007009665		www.ehowbuy.com	
37			
22			10
22			10
021-68419822		021-20835779	
400-920-0022		www.licaike.com	
38			
190	2	2	
195	30	7	
021-54509998		021-64385308	
400-1818-188		fund.eastmoney.com	
39			
100			19
100			19
021-33323999-5611		021-33323830	
4008202819		www.chinapnr.com	
40			
1333	14	09	
1333	14		
021-20665952		021-22066653	
4008219031		www.lufunds.com	
41			
359			B 4 A506
1386	15		
021-22267943		021-22268089	
400-928-2266		www.dtfortune.com	

42	
277 3 310	
518 8 3	
021-52822063	021-52975270
400-046-6788	www.66zichan.com
43	
1217 16 B	
1217 6	
021-80133597	021-80133413
4008081016	www.fundhaiyin.com
44	
765 602-115	
1 4	
021-80365020	021-63332523
4006433389	www.vstonewealth.com
45	
5475 1033	
91 61 10 12	
86-021-50583533	86-021-50583633
400-921-7755	http://a.leadfund.com.cn/
46	
6 105 -3491	
1 12 B1201-1203	
020-89629012	020-89629011
020-89629066	www.yingmi.cn
47	
11 11 1108	
11 11 1108	
010-56282140	010-62680827
400-619-9059	www.hcjijin.com
48	

1	A	201
	A	36 37

	17	256 1405	222 30
	010-59378856	021-51150298	021-61418888
	010-59378907	021-51150398	021-61411909

				2015	10	20	
2015	2310						
		2015	11	3	2015	11	18
					1.00		
	1,482,871,919.06				9,322		



5

15

15

2015 11

15

2015 11

15 2016 11 14

2016 11 15 2016

12 5

2016 12 6 2017 12 5

1

2

2016 11 21

2016 11 23 2016 12 7

2016 12 8 2017 12 7

1

2

3

4

5

1

2

T 7 ()

3

(T)
T

T+1
T+2 ()

1
1

1

2

100

100

3

4

1

1

5

6

2

2

3

$$= \quad / \quad 1$$

$$= \quad -$$

$$= \quad /$$

1

5

A

A

1.0520

$$=50000/(1+0.60\%)=49701.79$$

$$=50000-49701.79=298.21$$

A

$$47245.05 = 49701.79/1.0520$$

A

47245

0.05

5

A

0.6%

A

1.0520

47245.05

A

47245

A

2

5

C

C

1.0520

$$=50000/(1+0\%)=50000$$

$$=50000-50000=0$$

C 47528.52 =50000/1.0520

C 47528 0.52

5

1. 2500

125,000

5

÷

A C

4

5

1

2

3

4

5

6

1 2 3 5 6

1

2

3

4

5

1

(

)

20%

2

1

2

20%

20

3

3

1

2

1

1

3

1

2

2

2

1

4

2

2

1

2

2

1

5

80%

5%

1

1

2

3

4

5

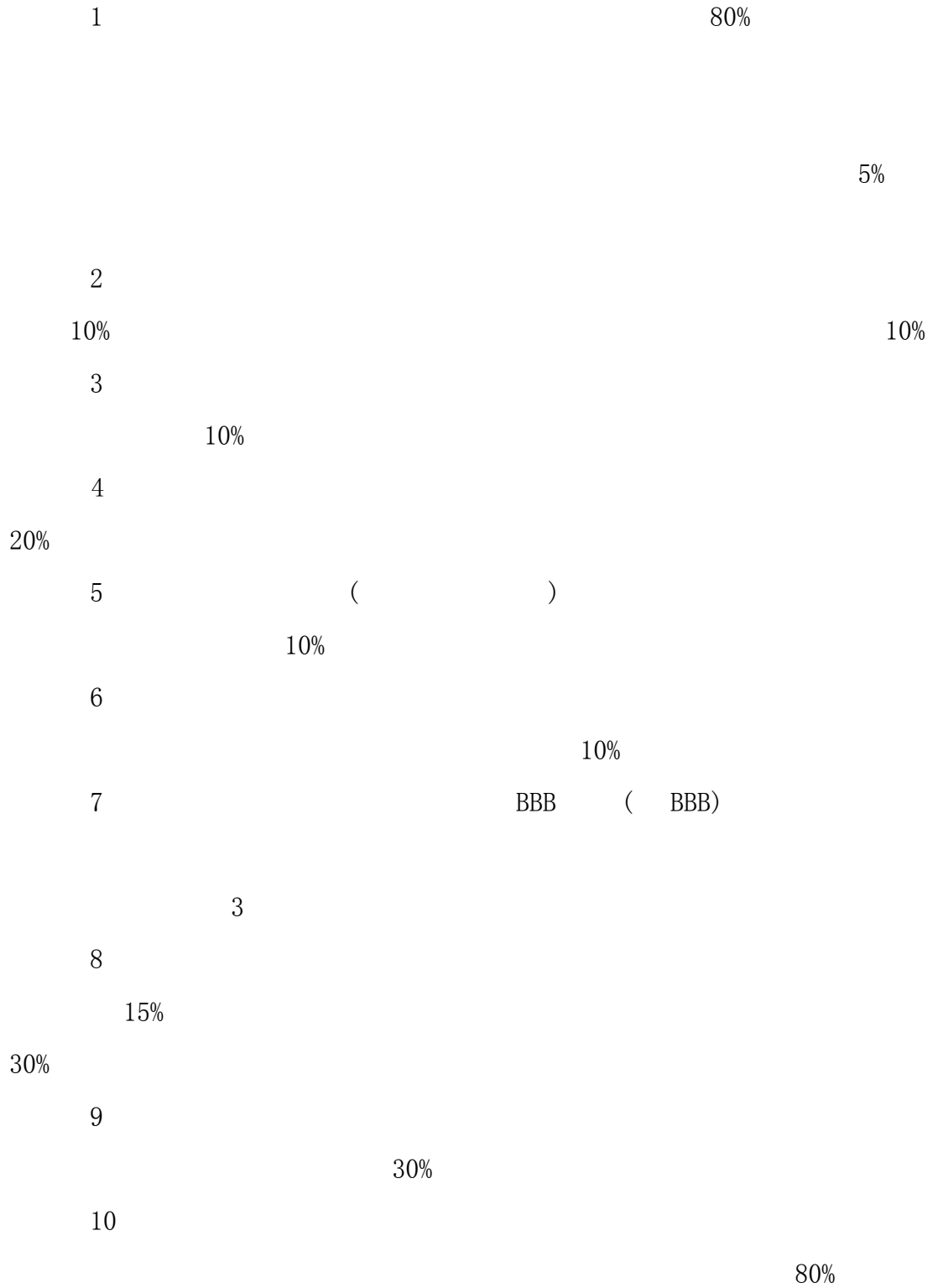
6

7

8

2

1



40%

1

13

10

6

2

1

2

3

4

5

6

+4%

+4%

1

+4%

2

+4%

+4%

2017 12

2017 9

			%
1		25,634,472.40	1.05
2		-	-
3		-	-
		-	-
4		1,678,804,042.20	68.65
5		115,389,000.00	4.72
6		60,684,000.00	2.48
7		-	-
8		-	-
9		-	-
10		1,880,511,514.60	76.90

					%
1	1580214	15	800,000	79,648,000.00	3.26
2	101456080	14	MTN001	60,684,000.00	2.48
3	136285	16	01	58,662,000.00	2.40
4	1380101	13		51,195,000.00	2.09
5	1580200	15		50,830,000.00	2.08

1

2

3

1

2

3

1		60,982.97
2		-
3		-
4		48,068,228.01
5		-
6		-

7		-
8		-
9		48,129,210.98

4

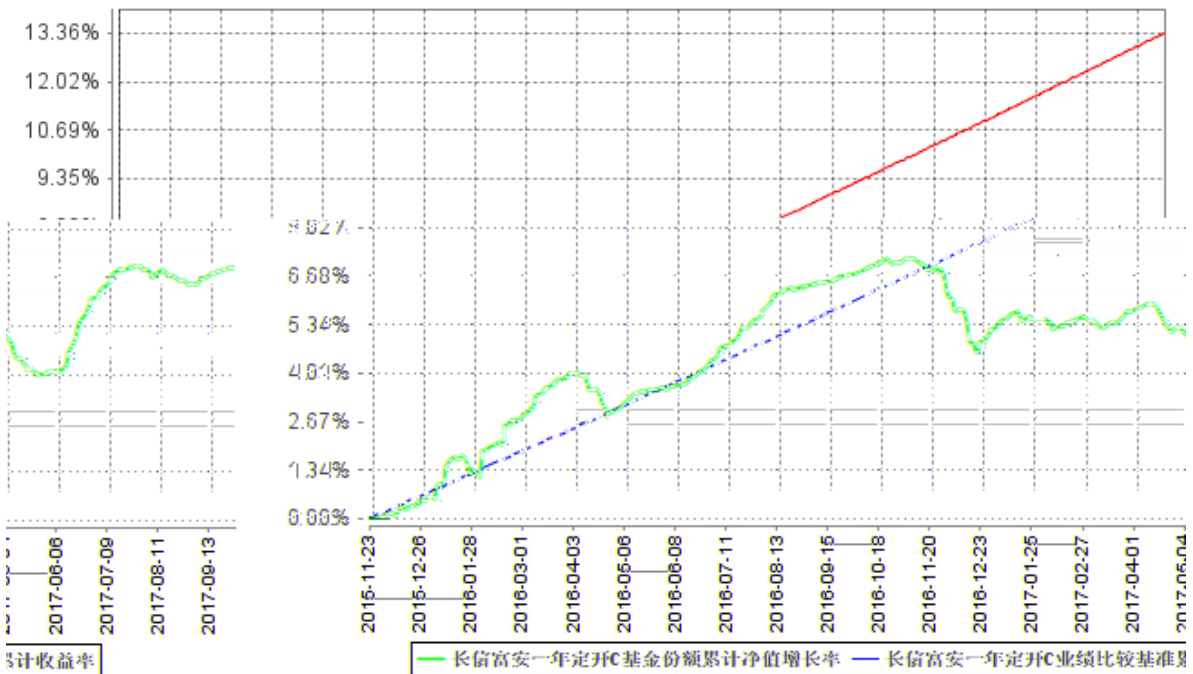
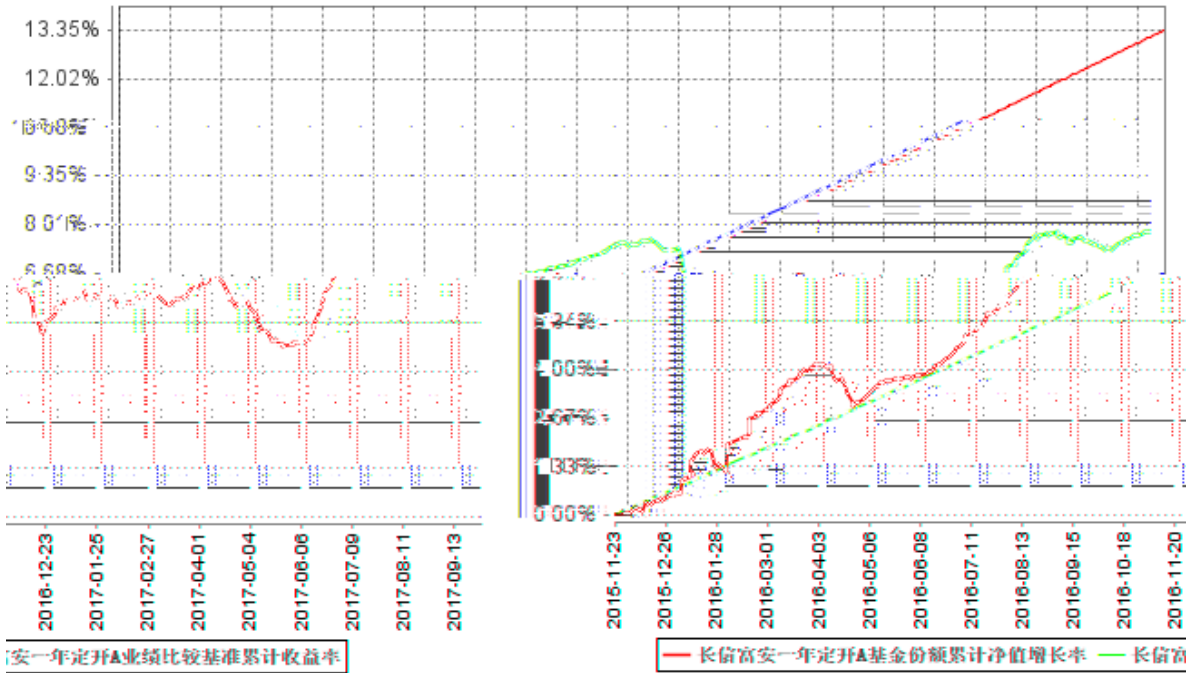
5

6

2017

A					-	-
2015 11 23 -2016 12 31	5.75%	0.09%	7.78%	0.02%	-2.03%	0.07%
2017 1 1 -2017 6 30	1.05%	0.07%	3.40%	0.02%	-2.35%	0.05%
2017 7 1 -2017 9 30	0.91%	0.04%	1.72%	0.01%	-0.81%	0.03%
C					-	-
2015 11 23 -2016 12 31	5.22%	0.09%	7.78%	0.02%	-2.56%	0.07%
2017 1 1 -2017 6 30	0.84%	0.07%	3.40%	0.02%	-2.56%	0.05%
2017 7 1 -2017 9 30	0.83%	0.04%	1.72%	0.01%	-0.89%	0.03%

--	--	--	--	--	--	--



1 2015 11 23 2017 9 30

2 6

/

1

1

2

3

4

5

2

1

2

3

3

4

5

6

1

A C

0.0001

5

2

4			
3			
1			
2			
3			
4			
4			
1			
2	0.25%		
		0.5%	
3			
1			
2			
3			

1

5

2

1
2
3
4
5
6
7
8
9
10

1

0.7%

H

H

E

2

2

2

0.2%

H

H

E

2

2

3

A

C

0.4%

C

0.4%

H

H C

E C

2

2

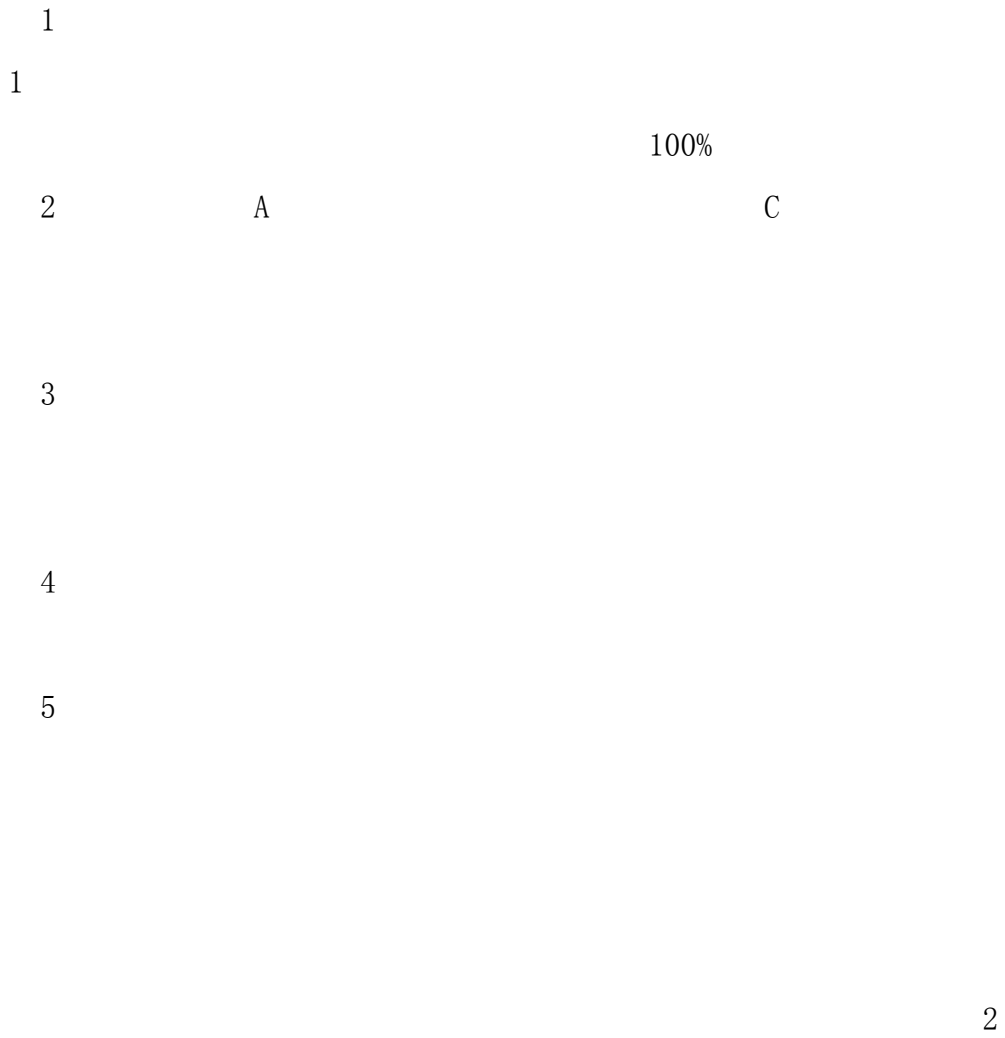
4 10

1

2

3

4



1

2

1 1 12 31

2

3

4

5

6

7

1

2

3

2

1
2
3
4
5
6

1

1

2

45

15

3

6

3

2

3

4

5

6

90

60

15

2

2

7

2

1

2

3

4

5

6

7

8

9

10

11

12

13

14

15

16

17

18

19

20

21

9

30

10

10

11

12

1 80%

2

3

4

1

1

2

3

4

5

6

7

2

3

IT

1

2

3

4

5

1

2

1

2

6

3

4

1

30

2

3

4

1

2

3

4

5

6

7

5

6

5

15

1

1

2

3

4

5

6

7

8

9

2

1

2

3

4

5

6

7

8

9

1

1

2

3

4

5

6

7

8

9

10

11

12

13

14

15

16

2

1

2

3

4

5

6

7

8

9

10

11

12

13

14

15

16

15

17

18

19

20

21

22

23

24

25

26

27

1

1

2

3

4

5

6

7

2

1

2

3

4

5

6

7

8

9

10

11

15

12

13

14

15

16

17

18

19

20

21

22

1

1

2

3

4

5

6

7

8

9

10

11

10%

10%

12

13

2

1

2

3

4

5

6

7

8

1

2

3

10

60

60

4	10%	10%							
		10							
60					10%		10%		
			10						
60									
5	10%	10%							
	10%	10%						30	
6									
1						30			
1									
2									
3									
4									
5									
6									
7									

2

3

1

1

2

50% 50%

2

1

2

2

35

30

1

2

10%

10%

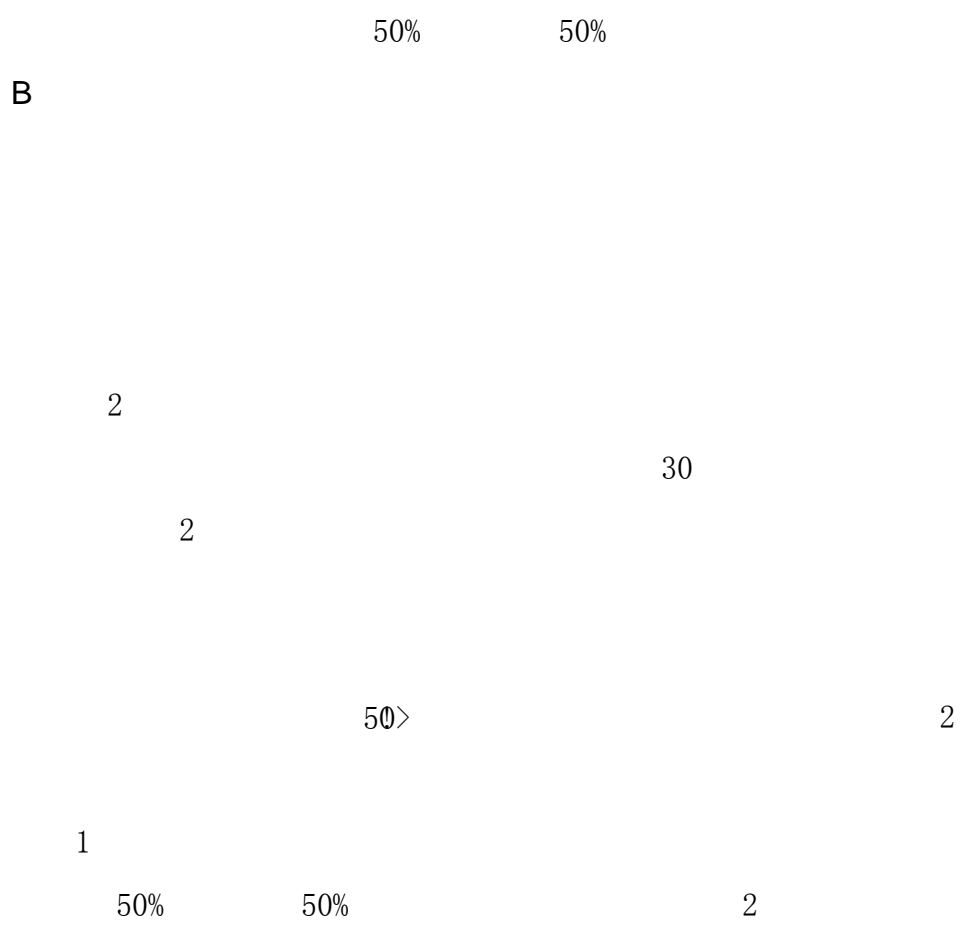
6

30

30

2

1



1

1

2

3

4

,

2

5

5

2

15

1

2

3

4

5

6

7

8

9

10

1

0.7%

H 0.7

H

E

2

2

2

0.2%

H 0.2

H

E

2

2

3

A

C

0.4%

C

0.4%

H

H C

E C

2

2

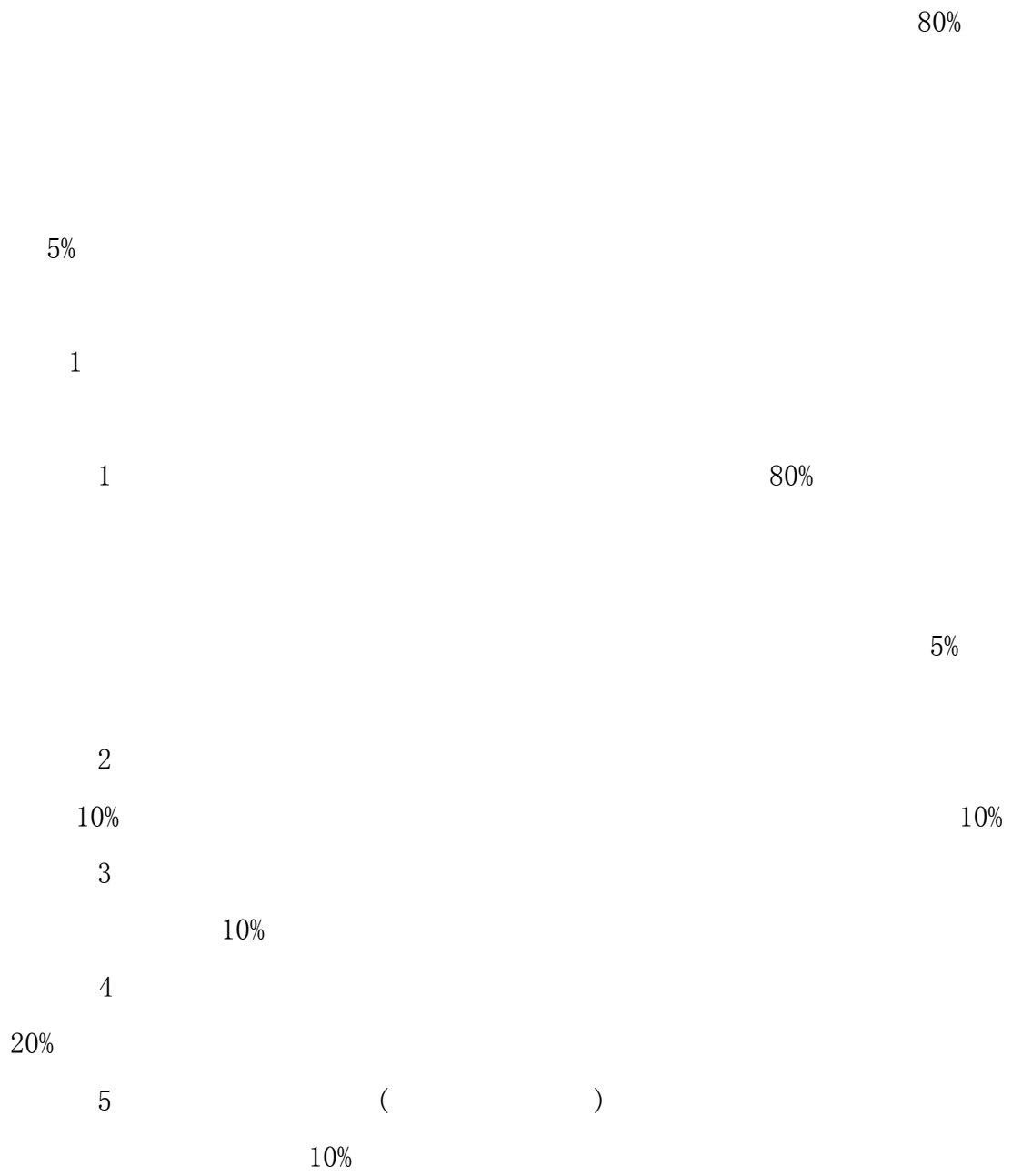
4 10

1

2

3

4



2

3

4

5

6

/

1

1

2

3

4

5

2

1

2

3

3

4

5

6

1

A C

0.0001

5

2

4 (4)

1

2

1

2

3

4

3

1

2

3

4

4

1

2

0.25%

3

1

2

3

1

5

2

1

2

1

2

6

3

4

1

30

2

3

4

1

2

3

4

5

6

7

5

6

5

15

68 9

68 9

200120

2003 5 9

[2003]63

1.5

2

2

100031

1996 2 7

[2004]101

28, 365, 585, 227

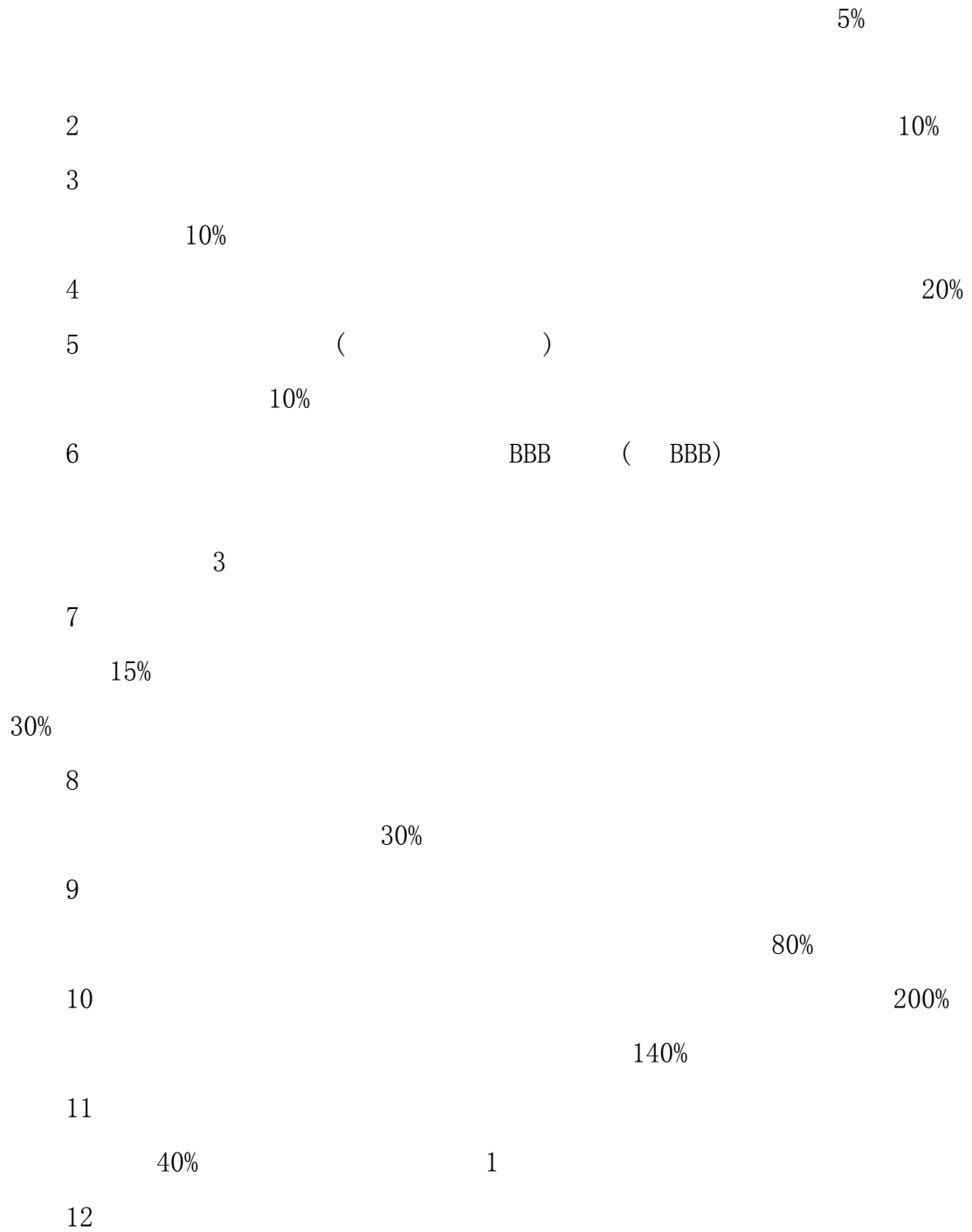
2017 2 18

80%

5%

1

80%



10

()

(

1

1

2

10%

2

,

3

10

1

2

3

4

5

6

7

8

1

2

2 2

3

1

2

3

4

5

1

2

3

4

5

1

2

/

15

1

0.0001

2

3

1

2

1

A.

B.

C.

D.

E.

2

A.

B

C.

3

4

5

6

3

5

1

()

5

1

2

3

1

2

3

1

5

15

60

90

2

15

1

2

3

4

1

1

30

2

3

2

1

2

3

4

5

6

7

6

3

4

5

5

6

15

			www.cxfund.com.cn
			7 24 5 ,
			400-700-5566 www.cxfund.com.cn (service@cxfund.com.cn) (021-61009865)
			400-700-5566

			www.cxfund.com.cn
		4007005566	8 30-12 00 13
		00-17:00	
		021-61009865	
		http://www.cxfund.com.cn	
		service@cxfund.com.cn	

1			2017/5/24
2			2017/5/26
3			2017/6/30
4			2017/7/1
5			2017/7/5
6	2017	2	2017/7/6
7			2017/7/8
8	2017	2	2017/7/19
9			2017/7/28
10			2017/8/14
11			2017/8/15

12			2017/8/18
13	2017		2017/8/24
14			2017/9/5
15			2017/9/8
16			2017/10/13
17	2017 3		2017/10/27
18			2017/11/11
19			2017/11/17
2017 11 23			

