

(LOF)

2018 4

2018 12 31

2019 1 19

§ 1

2019 1 16

2018 10 1 2018 12 31

§ 2

	(LOF)	
	163005	
	2016 2 5	
	257,437,826.15	
	LOF A	LOF C
	-	
	163007	163005
	157,279.95	257,280,546.20

2013 2 4

3  
2016 2 4 A  
B LOF

### § 3

#### 3.1

	2018 10 1	2018 12 31
	LOF A	LOF C
1	1,665.70	2,585,311.33
2	3,368.55	5,483,344.37
3	0.0215	0.0213
4	133,713.16	221,905,710.76
5	0.8502	0.8625

1

2

#### 3.2

##### 3.2.1

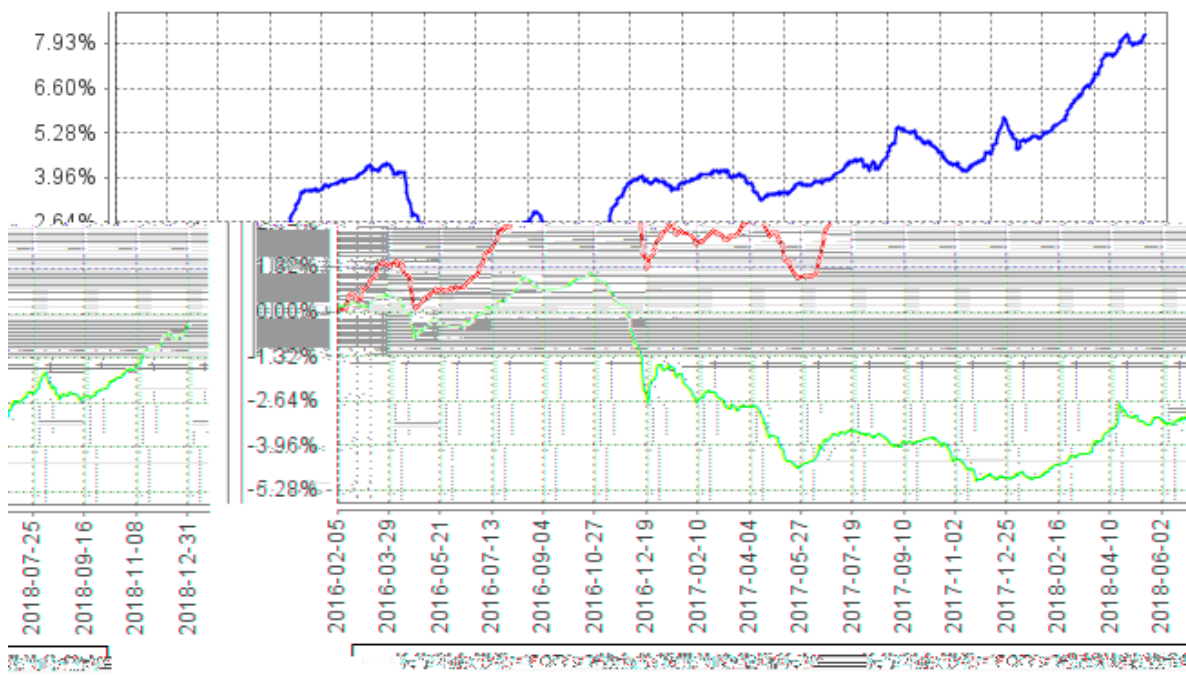
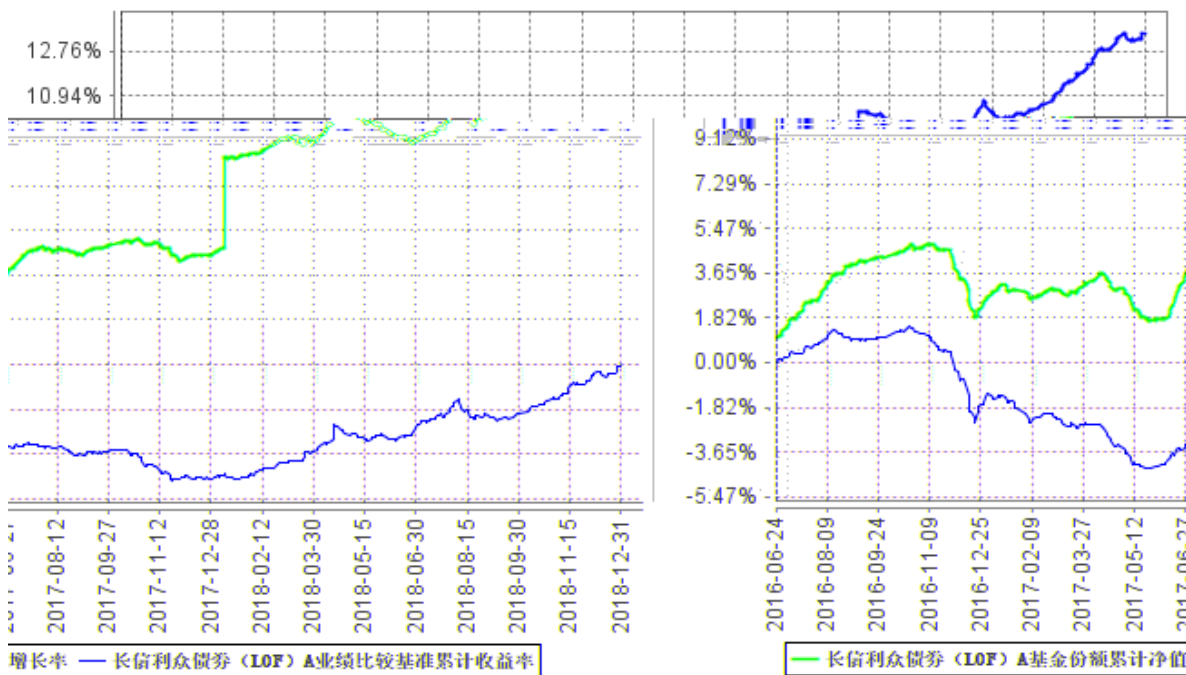
LOF A

	2.62%	0.06%	1.99%	0.05%	0.63%	0.01%

LOF C

	2.53%	0.06%	1.99%	0.05%	0.54%	0.01%

3.2.2



1	2016	6	24	LOF
C		A		
2	2016	2	5	LOF A
24	2018	12	31	LOF C
	2016	2	5	
	2018	12	31	

3 6  
2013 2 4 2016 2 5

## § 4

### 4.1

		F20 f28 1.4 cn382.56	572.16 135.925Tm2f/ /56 548.52 135.9.6 f/ /56 548.5
--	--	----------------------	---

## 4.2

## 4.3

### 4.3.1

### 4.3.2

5%

## 4.4

### 4.4.1

2018

10

45bp

10

### 4.4.2 2019

**4.5**

	LOF A	0.8502	1.1102
	2.62%		LOF C
0.8625	1.0725		2.53%
1.99%			

**4.6**

**§ 5**

**5.1**

			%
1		-	-
		-	-
2		-	-
3		268,911,003.30	96.27
		268,911,003.30	96.27
		-	-
4		-	-
5		-	-
6		-	-
		-	-
7		3,430,260.54	1.23
8		6,982,420.39	2.50
9		279,323,684.23	100.00

**5.2****5.2.1****5.2.2****5.3****5.4**

1		-	-
2		-	-
3		60,472,000.00	27.23
		60,472,000.00	27.23
4		116,905,758.00	52.65
5		-	-
6		85,915,000.00	38.69
7		5,618,245.30	2.53
8		-	-
9		-	-
10		268,911,003.30	121.11

**5.8**

**5.9**

**5.9.1**

**5.9.2**

**5.10**

**5.10.1**

**5.10.2**

**5.10.3**

**5.11**

**5.11.1**

**5.11.2**

**5.11.3**

1		234.50
2		186,701.12
3		-
4		6,795,472.77
5		12.00
6		-
7		-
8		-
9		6,982,420.39

**5.11.4**

			( )	
1	128024		635,880.00	0.29
2	113013		483,368.00	0.22
3	113018		327,510.00	0.15
4	110042		106,930.00	0.05
5	110043		96,910.00	0.04

**5.11.5****5.11.6****§ 6**

**§ 8**

**8.1**

**20%**

		20%					
	1	2018 10 1 2018 12 31	249,321,175.12	0.00	0.00	249,321,175.12	96.85%
	-	-	-	-	-	-	-
1							
2							
3							

**8.2**

**§ 9**

**9.1**

1

2

LOF

3

LOF

