

2019 1

2019 3 31

2019 4 22

§ 1

2019 4 17

2019 1 1 2019 3 31

§ 2

	005589
	005589
	2018 7 19
	201, 419, 489. 47

§ 3

3.1

	2019 1 1	2019 3 31
1.		25,105,800.64
2.		36,624,772.10
3.		0.1822
4.		214,668,822.26
5.		1.0658

1

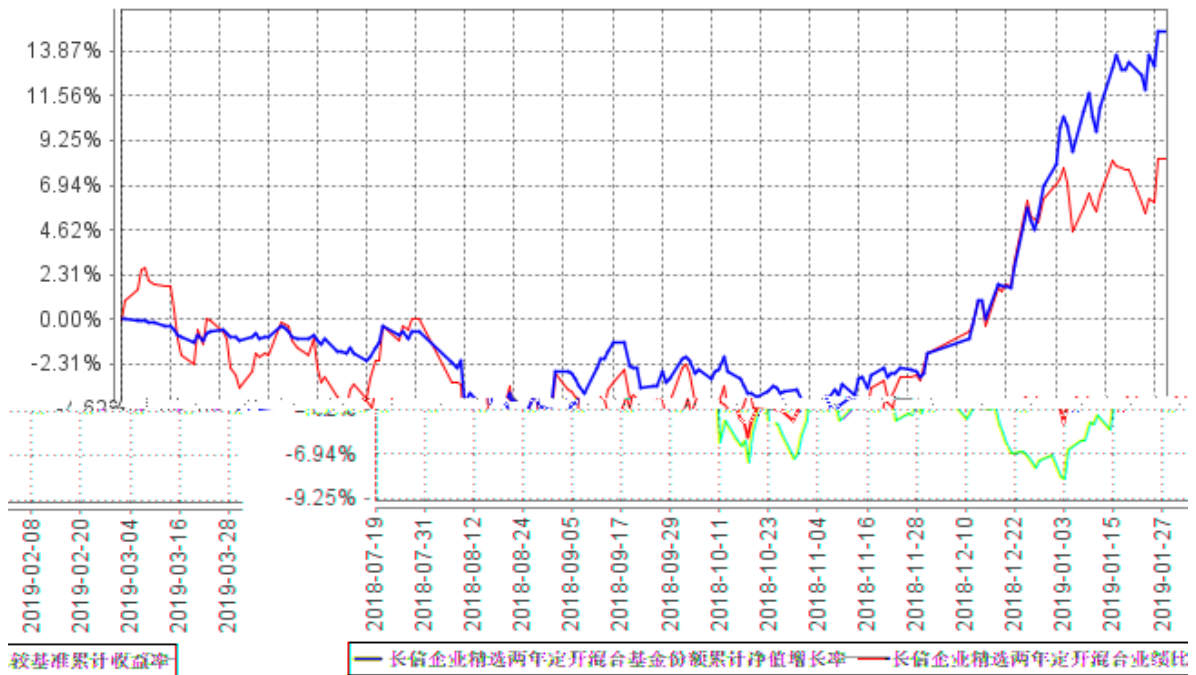
2

3.2

3.2.1

	19.24%	0.88%	16.45%	0.92%	2.79%	-0.04%

3.2.2



1 2018 7 19
 2018 7 19 2019 3 31
 2 6

§ 4

4.1

		2018 7 19	-	12	2007 7

--	--	--	--	--	--

1

/

2

4.2

4.3

4.3.1

4.3.2

5%

4.4

A

A

3 PMI

PMI

4 5

A

beta

A

4.5

1.0658

1.0658

19.24%

16.45%

4.6

§ 5

5.1

			%
1		129,999,654.90	58.89
		129,999,654.90	58.89
2		-	-
3		-	-
		-	-
		-	-
4		-	-
5		-	-
6		-	-
		-	-
7		90,590,337.25	41.04
8		150,604.31	0.07
9		220,740,596.46	100.00
		17,573,560.89	8.19%

5.2

5.2.1

			(%)
A		-	-
B		-	-
C		83,287,443.31	38.80
D		-	-
E		-	-
F		-	-
G		16,741,050.70	7.80
H		-	-
I		6,195,600.00	2.89
J		-	-
K		-	-
L		-	-

M		-	-
N		-	-
O		-	-
P		-	-
Q		-	-
R		6,202,000.00	2.89
S		-	-
		112,426,094.01	52.37

5.2.2

A		-	-
B		-	-
C		-	-
D		-	-
E		-	-
F		-	-
G		12,879,305.11	6.00
H		-	-
I		4,694,255.78	2.19
J		-	-
K		-	-
		17,573,560.89	8.19

5.3

1	300196		1,092,900	11,235,012.00	5.23
2	601021		250,000	10,150,000.00	4.73
3	603808		577,717	10,069,607.31	4.69
4	601689		409,200	8,253,564.00	3.84
5	000661		24,000	7,607,760.00	3.54
6	002690		250,000	6,945,000.00	3.24
7	00968		2,134,000	6,919,380.19	3.22
8	002352		179,985	6,591,050.70	3.07
9	300413		140,000	6,202,000.00	2.89
10	300188		360,000	6,195,600.00	2.89

5.4

5.5

5.6

5.7

5.8

5.9

5.9.1

5.9.2

5.10

5.10.1

5.10.2

5.10.3

5.11

5.11.1

5.11.2**5.11.3**

1		130,772.00
2		-
3		-
4		19,832.31
5		-
6		-
7		-
8		-
9		150,604.31

5.11.4**5.11.5**

			()	%	
1	300188		6,195,600.00	2.89	

5.11.6**§ 6**

	200,934,838.36
	484,651.11
:	-
"_"	-
	201,419,489.47

§ 7

7.1

	28,199,000.00
/	0.00
/	0.00
	28,199,000.00
%	14.00

7.2

§ 8

8.1

20%

20%

8.2

§ 9

9.1

1

2

3

4

5

6

9.2

9.3

<http://www.cxfund.com.cn>

2019 4 22