

2019 LOF
1

2019 3 31

2019 4 22

§

LOF

2019 1 2 2019 1 18

LOF

LOF

2019 1 21

LOF 20

2019 1 22 2019 2 25

2019 2 26

LOF

2019 4 18

2019 1 1 2019 3 31

§ 2

	501002
	501002
	2019 2 26

	7,242,556.60
	300 × 75% × 25%
	A

	LOF
	501002
	501002
	2016 1 21
	7,624,198.80
	0.35% 4%

	95%× 5%×

“ ” 2019 2 25

§

	2019 2 26	2019 3 31
1.		313,438.73
2.		105,380.65
3.		0.0140
4.		5,106,654.24
5.		0.7051

1 2019 2 26

2

3

	2019 1 1	2019 2 25
1.		-339,597.06
2.		598,430.30
3.		0.0760
4.		5,266,172.45
5.		0.691

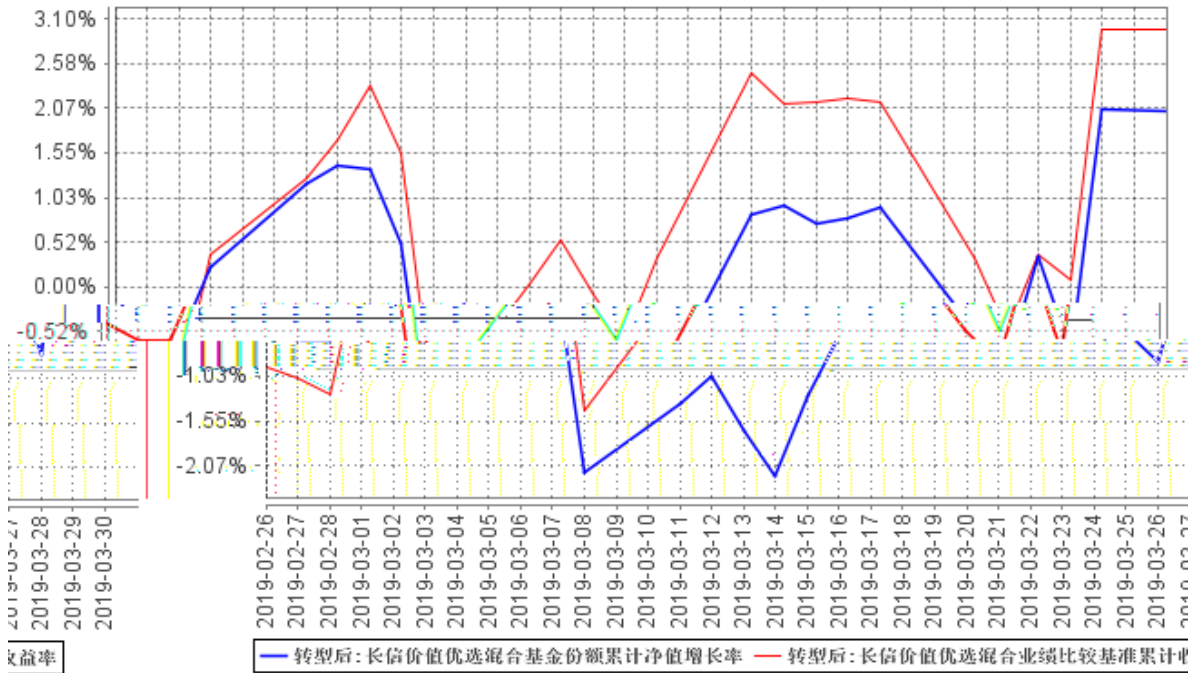
1

2

3.2

2019 2 26 -2019 3 31	2.04%	1.10%	2.98%	1.22%	-0.94%	-0.12%

3.2.2



1 2019 2 26
 2019 2 26 2019 3 31
 2 6
 50%-95%
 50% 3%
 5% ()

3.2

2019 1 1						
-2019 2 25	12.54%	1.21%	25.24%	1.63%	-12.70%	-0.42%

	LOF				500
					LOF

1

/

2

	500	2019 2 26	-	5	2016 9
					500

8

26

		2019 2 26	-	8	2016

1

/

2

3 2019 2 26

LOF

4.2

4.3

5%

4.4

LOF 2016 1 21
2019 2 26

“

”

100

1 2

1 “

” 1 1

0.5 “ ” 0.5

2

85% 25%-75% 85%-65% 25%
80%-60% 90% 60%-50% 75%-90%

20%

15%

10%

/

20

NAV

2018

2006

“ ”

ROE

“ ”

4.5

2019 3 31 0.7051 0.7051
 12.54% 25.24%
 2.04% 2.98%

2016 2 4 2016 5 6
 2019 2 25
 LOF 2019 2
 26 2019 3 25

§

5.1

			%
1		4,827,948.00	92.99
		4,827,948.00	92.99
2		-	-

3		262,305.00	5.05
		262,305.00	5.05
		-	-
4		-	-
5		-	-
6		-	-
		-	-
7		89,591.26	1.73
8		12,301.20	0.24
9		5,192,145.46	100.00

5.2

			(%)
A		-	-
B		-	-
C		1,743,774.00	34.15
D		389,076.00	7.62
E		-	-
F		202,488.00	3.97
G		555,525.00	10.88
H		-	-
I		-	-
J		1,125,709.00	22.04
K		811,376.00	15.89
L		-	-
M		-	-
N		-	-
O		-	-
P		-	-
Q		-	-
R		-	-
S		-	-
		4,827,948.00	94.54

5.2.2

5.3

1	600048		36,700	522,608.00	10.23
2	600377		49,400	489,060.00	9.58
3	601398		81,500	453,955.00	8.89
4	601939		65,200	453,140.00	8.87
5	600987		34,900	376,571.00	7.37
6	600660		15,000	364,950.00	7.15
7	600104		12,100	315,447.00	6.18
8	000002		9,400	288,768.00	5.65
9	300196		26,200	269,336.00	5.27
10	600566		7,300	251,996.00	4.93

5.4

1			-	-	-
2			-	-	-
3			262,305.00		5.14
			262,305.00		5.14
4			-	-	-
5			-	-	-
6			-	-	-
7			-	-	-
8			-	-	-
9			-	-	-
10			262,305.00		5.14

5.5

1	108603	1804	2,610	262,305.00	5.14

5.6

5.8

5.9

5.10.2.

5.11

601398_

2018 11 19

2018 28

18 26

30

1		7,335.96
2		-
3		-
4		4,765.48
5		199.76
6		-
7		-
8		-
9		12,301.20

5.11.4**5.11.5****5.11.6**

5.1

			%
1		2,415,645.76	45.26
		2,415,645.76	45.26
2		-	-
3		149,970.00	2.81
		149,970.00	2.81
		-	-
4		-	-
5		-	-
6		-	-
		-	-
7		2,763,269.74	51.77
8		8,250.99	0.15
9		5,337,136.49	100.00

5.2

5.2.1

			(%)
A		-	-
B		-	-
C		2,134,893.04	40.54
D		53,964.06	1.02
E		-	-
F		-	-
G		-	-
H		-	-
I		226,788.66	4.31
J		-	-
K		-	-
L		-	-

Q		-	-
R		-	-
S		-	-
		2,415,645.76	45.87

5.2.2

5.3

5.3.1

1	601012		5,655	163,768.80	3.11
2	002202		10,574	155,966.50	2.96
3	600522		14,398	148,299.40	2.82
4	600089		17,155	138,783.95	2.64
5	300274		10,700	138,244.00	2.63
6	002074		7,198	124,453.42	2.36
7	002594		2,242	123,444.52	2.34
8	300001		5,400	120,528.00	2.29
9	600406		5,761	115,738.49	2.20
10	300014		4,500	90,855.00	1.73

5.3.2

5.4

1		149,970.00	2.85
2		-	-
3		-	-
		-	-
4		-	-

5			-	-
6			-	-
7			-	-
8			-	-
9			-	-
10			149,970.00	2.85

5.5

1	019611	19	01	1,500	149,970.00	2.85

5.6

5.8

5.9

5. 11

5. 11. 1

1		3, 228. 56
2		-
3		-
4		5, 022. 43
5		-
6		-
7		-
8		-
9		8, 250. 99

5. 11. 4

5. 11. 5

5.11.6

§

2019 2 26	7,624,198.80
	58,372.15
:	440,014.35
"_"	-
	7,242,556.60

§ 6

	8,066,040.49
	628,910.26
:	1,070,751.95
"_"	-
	7,624,198.80

“ ” 2019 2 25

§ 7

§

§

		20%					
	1	2019 1 1 2019 3 31	3,846,449.73	0.00	0.00	3,846,449.73	53.11%
	-	-	-	-	-	-	-
1							
2							
3							

8.2

§

9.1

1

2

LOF

3

LOF

4

LOF

5

6

7

8

9

9.2

9.3

<http://www.cxfund.com.cn>

2019 4 22