

2023 4

2023 12 31

2024 1 22

§3

3.1

	2023 10 1	-2023 12 31
	A	C
1.	-15,535,909.17	-2,895,290.61
2.	-7,393,234.84	-1,421,542.62
3.	-0.0199	-0.0209
4.	234,358,362.35	42,584,107.59
5.	0.6487	0.6386

1

2

3.2

3.2.1

A

	-3.01%	1.01%	-4.11%	0.56%	1.10%	0.45%
	-10.39%	0.94%	-7.12%	0.59%	-3.27%	0.35%
	-13.99%	0.91%	-6.77%	0.58%	-7.22%	0.33%
	-35.13%	1.24%	-22.36%	0.73%	-12.77%	0.51%

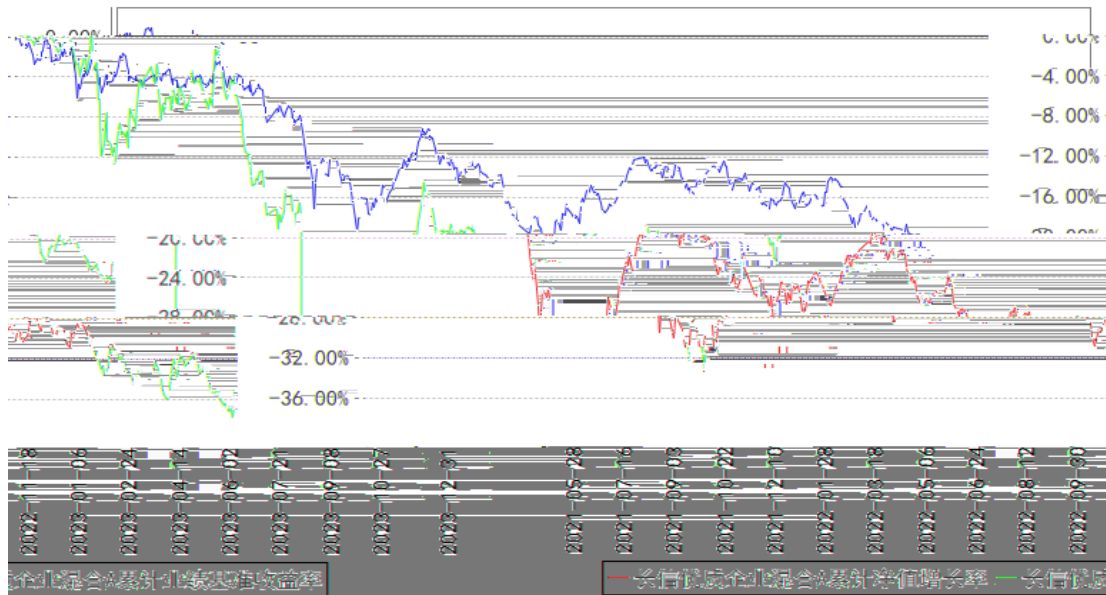
C

--	--	--	--	--	--	--

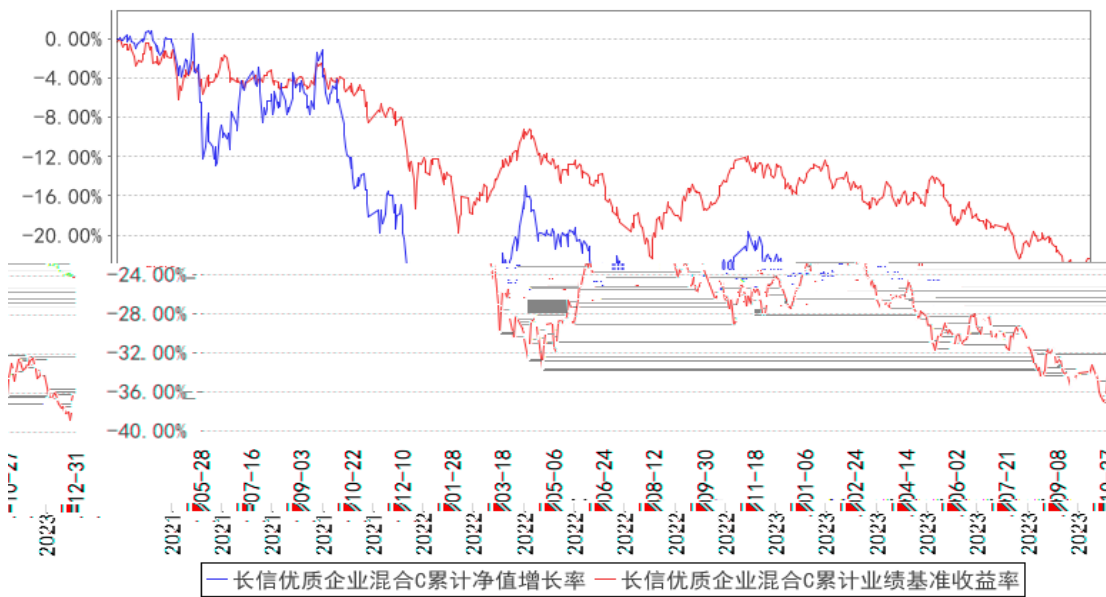
	-3.15%	1.01%	-4.11%	0.56%	0.96%	0.45%
	-10.66%	0.94%	-7.12%	0.59%	-3.54%	0.35%
	-14.51%	0.91%	-6.77%	0.58%	-7.74%	0.33%
	-36.14%	1.24%	-22.36%	0.73%	-13.78%	0.51%

3.2.2

长信优质企业混合A累计净值增长率与同期业绩比较基准收益率的历史走势对比图



长信优质企业混合C累计净值增长率与同期业绩比较基准收益率的历史走势对比图



1 2021 5 28 2023 12 31

2

6

§4

4.1

					2007 7
					FOF
		2022 10 13	-	16	

1

2

4.2

4.3

4.3.1

4.3.2

5%

4.4

4

2024

10 PB

A

AI

4.5

2023 12 31 , A 0.6487 ,
 0.6487 , A -3.01%; C
 0.6386 , 0.6386 , C -3.15%,
 -4.11%

4.6

§5

5.1

			%
1		243,516,802.66	87.68
		243,516,802.66	87.68
2		-	-
3		17,214,407.75	6.20
		17,214,407.75	6.20
		-	-
4		-	-
5		-	-
6		-	-
		-	-

7		16,996,294.10	6.12
8		914.75	0.00
9		277,728,419.26	100.00

44,079,809.51

15.92%

5.2

5.2.1

			%
A		-	-
B		-	-
C		166,654,421.21	60.18
D		-	-
E		-	-
F		8,885,941.98	3.21
G		-	-
H		-	-
I		14,284,320.00	5.16
J		-	-
K		5,940,000.00	2.14
L		-	-
M		3,672,309.96	1.33
N		-	-
O		-	-
P		-	-
Q		-	-
R		-	-
S		-	-
		199,436,993.15	72.01

5.2.2

		%
	-	-
	-	-
	-	-
	-	-
	-	-
	25,939,170.05	9.37
	-	-

	9,460,501.81	3.42
	-	-
	8,582,809.62	3.10
	97,328.03	0.04
	44,079,809.51	15.92

5.3

5.3.1

					%
1	601702		750,000	13,462,500.00	4.86
2	300791		302,000	10,467,320.00	3.78
3	300037		211,452	10,001,679.60	3.61
4	002475		288,300	9,931,935.00	3.59
5	603517		354,960	9,534,225.60	3.44
6	00992		956,000	9,460,501.81	3.42
7	688789		90,710	9,062,836.10	3.27
8	603883		296,700	8,868,363.00	3.20
9	300316		200,000	8,818,000.00	3.18
10	00867		693,000	8,691,664.77	3.14

5.4

				%
1			7,082,235.62	2.56
2			-	-
3			10,132,172.13	3.66
			10,132,172.13	3.66
4			-	-
5			-	-
6			-	-
7			-	-
8			-	-
9			-	-
10			17,214,407.75	6.22

5.5

					%
1	230406	23 06	100,000	10,132,172.13	3.66
2	019678	22 13	70,000	7,082,235.62	2.56

5.6

5.7

5.8

5.9

5.9.1

5.9.2

5.10

5.10.1

5.10.2

5.10.3

5.11

5.11.1

3		-
4		-
5		914.75
6		-
7		-
8		914.75

5.11.4

5.11.5

5.11.6

§6

	A	C
	381,536,341.74	69,652,946.02
	342,406.53	726,830.96
:	20,598,856.70	3,696,553.37
" -"	-	-
	361,279,891.57	66,683,223.61

§7

7.1

	A	C
	14,776,119.40	-
/	-	-
/	-	-
	14,776,119.40	-
%	3.45	-

7.2

§8

8.1

20%

20%

8.2

§9

9.1

1

2

3

4

5

6

9.2

9.3

<https://www.cxfund.com.cn>

2024 1 22