

2024 2

2024 6 30

2024 7 19

§1

2024 7 17

2024 4 1 2024 6 30

§2

	GGHL
	519971
	519971
	2014 8 6
	4,974,032.25
	1
	2
	3

	4		
	300	× 60%+	× 40%

§3

3.1

	2024 4 1 -2024 6 30
1.	3,843.26
2.	-46,507.05
3.	-0.0093
4.	6,423,546.53
5.	1.291

1

2

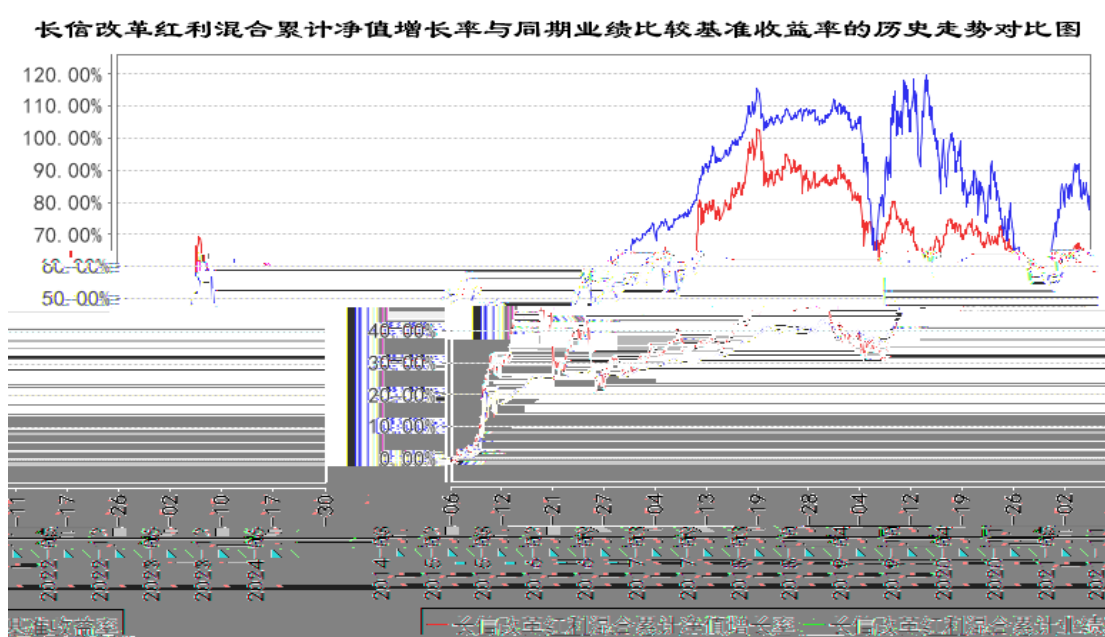
3.2

3.2.1

	-0.69%	1.06%	-0.49%	0.44%	-0.20%	0.62%

	14.55%	1.13%	2.37%	0.53%	12.18%	0.60%
	-4.80%	1.04%	-3.42%	0.52%	-1.38%	0.52%
	-12.33%	1.29%	-15.91%	0.62%	3.58%	0.67%
	15.47%	1.03%	5.75%	0.68%	9.72%	0.35%
	81.84%	0.82%	61.92%	0.83%	19.92%	-0.01%

3.2.2



1 2014 8 6 2024 6 30

2 6

§4

4.1



--	--	--	--	--	--

1

2

4.2

4.3

4.3.1

4.3.2

5%

4.4

5

5 6

1

2

3

4 AI

AI

4.5

2024 6 30

1.291

1.686

-0.69%

-0.49%

4.6

2024 1 19 2024 6 30

\$5

5.1

			%
1		4,615,308.39	69.27
		4,615,308.39	69.27
2		-	-
3		406,246.03	6.10
		406,246.03	6.10
		-	-
4		-	-
5		-	-
6		-	-
		-	-
7		1,632,985.98	24.51
8		7,769.60	0.12
9		6,662,310.00	100.00

		%
	-	-
	63,168.00	0.98
	4,148,324.60	64.58



6	601567		7,800	273,000.00	4.25
7	000680		28,100	260,487.00	4.06
8	000425		35,500	253,825.00	3.95
9	601138		9,000	246,600.00	3.84
10	600114		17,100	246,069.00	3.83

5.4

--	--	--	--

5. 10

5. 10. 1

5. 10. 2

5. 10. 3

5. 11

5. 11. 1

5. 11. 2

5. 11. 3

1		7, 260. 35
2		-
3		-
4		-
5		509. 25
6		-
7		-
8		7, 769. 60

5. 11. 4

5. 11. 5

5. 11. 6

§6

	4,921,848.55
	399,308.58
	347,124.88
" - "	-
	4,974,032.25

§7

7.1

7.2

§8

8.1

20%

20%

8.2

§9

9.1

- 1
- 2
- 3
- 4
- 5
- 6

9.2

9.3

<https://www.cxfund.com.cn>

2024 7 19