

2025 4

2025 12 31

2026 1 22

	009778	009779
	192,234,545.73	81,992,080.71

§3

3.1

	2025	10	1	-2025	12	31
	A			C		
1.	6,685,240.62			2,678,092.31		
2.	-5,644,586.86			-2,392,160.08		
3.	-0.0283			-0.0284		
4.	100,787,776.59			41,679,404.50		
5.	0.5243			0.5083		

1

2

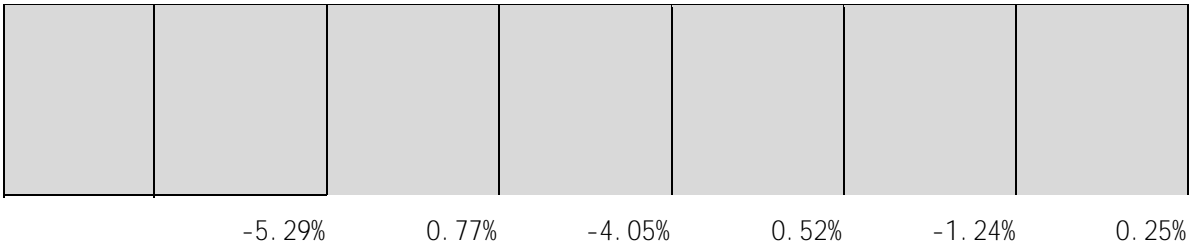
3.2

3.2.1

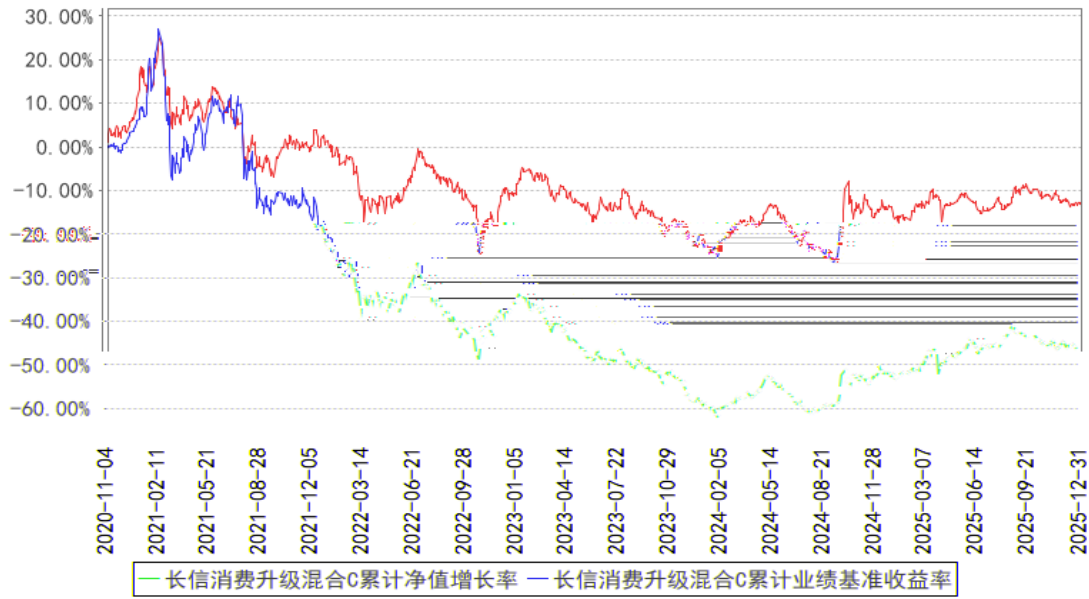
A

	-5.14%	0.77%	-4.05%	0.52%	-1.09%	0.25%
	-1.37%	0.73%	1.66%	0.55%	-3.03%	0.18%
	11.08%	1.04%	0.81%	0.72%	10.27%	0.32%
	-12.95%	1.11%	-2.87%	0.90%	-10.08%	0.21%
	-48.24%	1.43%	-21.95%	1.05%	-26.29%	0.38%
	-45.06%	1.40%	-13.32%	1.05%	-31.74%	0.35%

C



长信消费升级混合C累计净值增长率与同期业绩比较基准收益率的历史走势对比图



1 2020 11 4 2025 12 31

2 6

§4

4.1

					2013 7 2015
					5 2015 6 2017 4
		2021 6 30	-	12	2017 5

1

2

4.2

4.3

4.3.1

4.3.2

5%

4.4

2025

CPI

10

2026

2025

2026

15-20

4.5

2025 12 31

A

0.5243

0.5743

A

-5.14%

C

0.5083

0.5583

C

6

12

-5.29%

-4.05%

4.6

\$5

5.1

			%
1		115,422,584.75	79.02
		115,422,584.75	79.02
2		-	-
3		-	-
		-	-
		-	-
4		-	-
5		-	-
6		-	-
		-	-
7		29,878,501.37	20.46
8		766,409.89	0.52
9		146,067,496.01	100.00

46,744,524.41

32.81%

5.2

5.2.1

			%
A		-	-
B		-	-
C		64,396,903.34	45.20
D		-	-
E		-	-
F		-	-
G		-	-
H		-	-
I		2,787,109.00	1.96

J		-	-
K		-	-
L		1,494,048.00	1.05
M		-	-
N		-	-
O		-	-
P		-	-
Q		-	-
R		-	-
S		-	-
		68,678,060.34	48.21

5.2.2

		%
	-	-
	33,944,642.58	23.83
	5,581,203.07	3.92
	-	-
	-	-
	-	-
	7,218,678.76	5.07
	-	-
	-	-
	-	-
	-	-
	46,744,524.41	32.81

5.3

5.3.1

					%
1	600298		200,800	8,782,992.00	6.16
2	01070	TCL	928,000	8,700,393.10	6.11
3	01364		368,201	8,240,998.05	5.78
4	01519	-W	764,800	7,218,678.76	5.07
5	603766		389,600	6,276,456.00	4.41
6	603345		72,999	5,787,360.72	4.06
7	600519		4,000	5,508,720.00	3.87
8	09992		31,312	5,308,460.94	3.73
9	06181		7,900	4,409,700.68	3.10
10	603129		15,800	4,403,144.00	3.09

5.4

5.5

5.6

5.7

5.8

5.9

5.9.1

5.9.2

5.10

5.10.1

5.10.2

5.10.3

5.11

5.11.1

5.11.2

5.11.3

1		204,568.64
2		-
3		198,737.97
4		-
5		363,103.28
6		-
7		-
8		766,409.89

5.11.4

5.11.5

5.11.6

§6

	A	C
	211,268,400.35	86,431,531.11
	2,299,040.28	3,176,080.68
:	21,332,894.90	7,615,531.08
" -"	-	-
	192,234,545.73	81,992,080.71

§7

7.1

	A	C
	115,808.88	-
/	-	-
/	-	-
	115,808.88	-
%	0.04	-

7.2

§8

8.1

20%

20%

8.2

§9

9.1

1

2

3

4

5

6

9.2

9.3

ú

(

2026 1 22