

2017 2

2008 357

2008 6 19

重要提示

2008 3 7

2008 357

2008 6 19

30% 80%

1

			IMBA
			,
			/
			MBA EMPACC
			EMBA
			2002

			()
1			
2	2017	7	4
3	2017	7	4

2

--	--	--	--	--

4

2007

2017 3 10

		2008 6 19 2010 8 26	
		2008 7 25 2010 7 5	
2 2017 8 1			

5

LOF

1 2017 7 8

2

1

69

28

2009 1 15

[2009]13

[1998]23

32,479,411.7

010-66060069

010-68121816

,

2009 1 15

500

2004 2007
 SAS70 SAS70
 2010
 ISAE3402
 2010 TOP10
 2010
 2012
 2013 2015
 2015
 1998 5
 2014 /
 2
 140 30
 20
 3
 2017 3 31
 361
 1
 ,
 , , ,



,

2

,

,

,

3

,

,

1

2

3

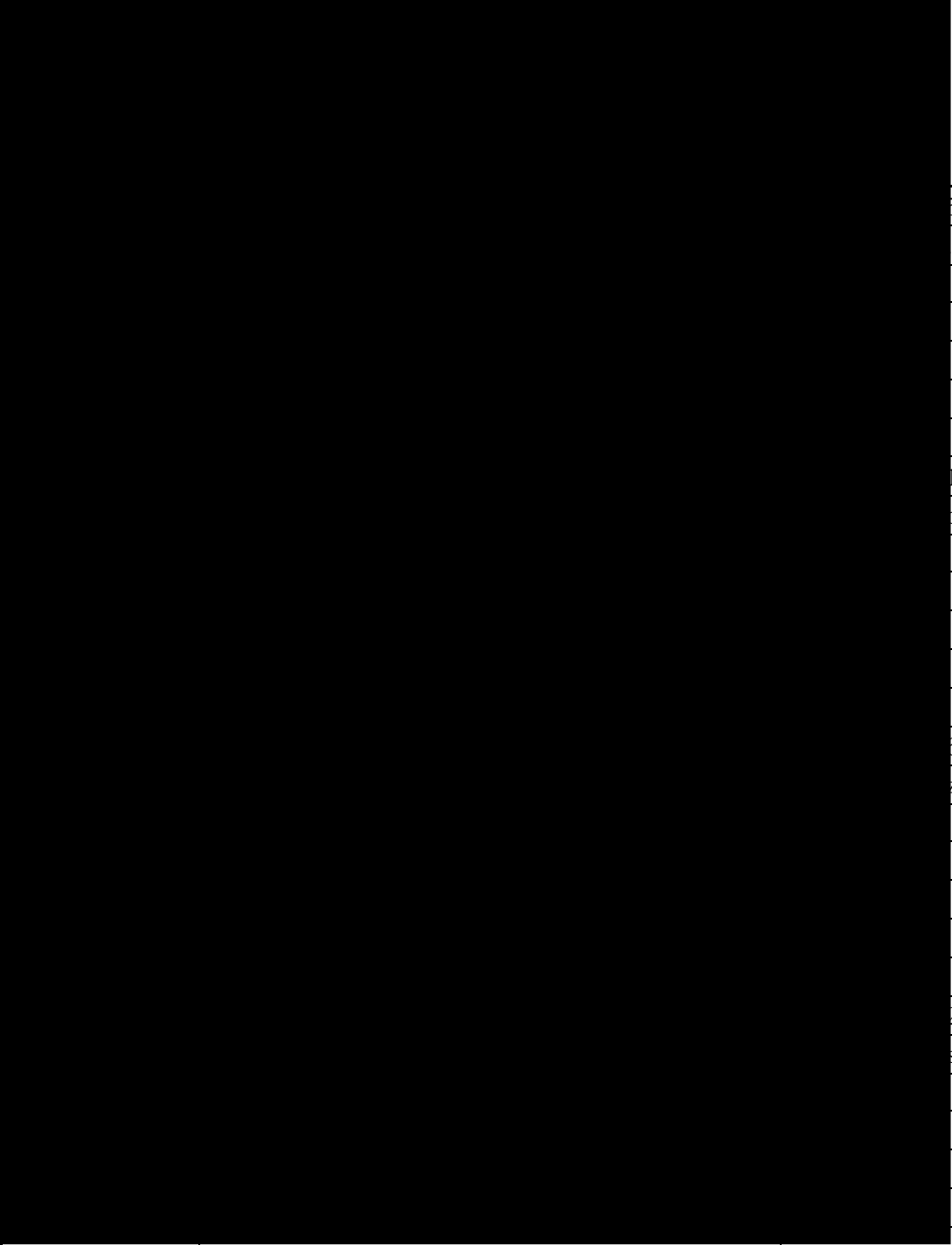
1	
68 9	
68 9	
021-61009916	021-61009917
400-700-5566	www.cxfund.com.cn
2	
1	
3	
3	
010-68858101	010-68858117
95580	www.psbc.com
2	
69	
69	
010-85109219	
95599	www.abchina.com
3	
55	
55	
010-66105662	
95588	www.icbc.com.cn
4	
1	
1	
010-66593657	
95566	www.boc.cn
5	
25	
1 1	
010-67596084	
:95533	www.ccb.com

6	
188	
188	
021-58781234	021-58408483
95559	www.bankcomm.com
7	
7088	
7088	
0755-83198888	0755-83195109
95555	www.cmbchina.com
8	
12	
12	
021-61618888	021-63604199
95528	www.spdb.com.cn
9	
154	
154	
0591-87839338	0591-87841932
95561	www.cib.com.cn
10	
2	
2	
010-58560666	010-57092611
95568	www.cmbc.com.cn
11	
8	C
8	C
010-65558888	bank.ecitic.com
95558	
12	

153	
153	
023-63799379	023-63792412
(023)63836229	www.cqcbank.com
13	
22	
22	
010-85238667	010-85238680
010-95577	www.hxb.com.cn
14	
933	
933	
027-82656224	027-82656236
027 96558, 4006096558	www.hkbchina.com
15	
46	
46	
0571-85108195	0571-85106576
96523 400-8888-508	www.hzbank.com.cn
16	
1099	
1099	
0755-22166118	0755-25841098
95511-3	bank.pingan.com
17	
101	
101	
0592-5365735	0592-5061952
400-858-8888	www.xmbankonline.com
18	
4018	35 28 A02

	4018	35	28	A02
	0755-82558305			0755-28558355
	4008-001-001			www.essence.com.cn
19				
	6008	14	16	17
	6008	14	16	17
	0755-83516289			0755-83515567
	400-6666-888			www.cgws.com
20				
	8			
	8			
	027-65799999			027-85481900
	95579 4008-888-999			www.95579.com
21				
	24			
	129			39
	0411-39673202			0411-39673219
	4008-169-169			www.daton.com.cn
22				
	510	9		
	500	26		
	021-68761616			021-68767032
	400-8888-128			www.tebon.com.cn
23				
	115	20		
	115	18		
	0755-23838751			0755-25831754
	95358			www.firstcapital.com.cn
24				
	318	2	22-29	
	318	2	21-29	

021-63325888		021-63326173
95503		www.dfzq.com.cn
25		
	1	
	1	30
0769-22112062		0769-22119423
0769-961130		www.dgzq.com.cn
26		
	5	
	5	
0512-62938521		0512-65588021
400 860 1555		www.dwzq.com.cn
27		
	1508	
	1508	
021-22169999		021-22169134
95525		www.ebscn.com
28		
	5	19 20
	5	19 20
020-88836999		020-88836654
020-961303		www.gzs.com.cn
29		
	157	7 8
	157	7 10
0591-87383623		0591-87383610
96326	0591	www.hfzq.com.cn
30		
	183	43
	183	43



557985
com. cn
183311-3389
odu. com
690126
zq. com. cn
2830162
sc. com. cn

0791-86283080

95536	www.guosen.com
37	
179	
179	
05551-2615542	0551-2634906
955784008-888-777	www.gyzq.com.cn
38	
98	
689	
021-23219000	021-23219100
400-8888-001 95553	www.htsec.com
39	
198	
959 B1	
0551-5161666	0551-5161600
96518 400-80-96518	www.hazq.com

40

43		
	56	
	56	
	0451-82336863	0451-82287211
	400-666-2288	www.jhzq.com.cn
44		
	1619	A 41
	1619	A 41
	0791-86768681	0791-86770178
	400-8866-567	www.avicsec.com
45		
	8	
	8	518048
	0755-22626391	0755-82400862
	95511 8	www.stock.pingan.com
46		
	86	
	86	
	0531-68889155	0531-68889752
	95538	www.qlzq.com.cn
47		
	336	
	336	
	021-53519888	021-53519888
	4008918918 021-962518	www.962518.com
48		
	989 45	
	989 40	
	021-33389888	021-33388224
	95523 4008895523	www.swhysc.com

49	
:	2
2	
027-87618882	027-87618863
028-86711410	www.tfzq.com
50	
19	B 701
28	C 5
010-66045529	010-66045518
010-66045678	www.txsec.com
51	
101	
118	24
021-36533017	021-36533017
400-8811-177	www.xzsec.com
52	
198	11
198	11
021-68634518	021-68865680
400-888-1551	www.xcsc.com
53	
18	
1	11
010-83991743	010-66412537
010-83991888	www.rxzq.com.cn
54	
268	
1199	. 1 21
021-38565785	
400-8888-123	www.xyzq.com.cn
55	

38-45					
38-45					
0755-82960223			0755-82943121		
95565 400-8888-111			www.newone.com.cn		
56					
5		A		6-9	
5		A		6-9	
010-59355543			010-66553791		
40088-95618			www.e5618.com		
57					
35		2-6			
35		C			
010-66568292			010-66568990		
4008-888-888			www.chinastock.com.cn		
58					
66		4			
:		188			
010-85130588			010-65182261		
400-8888-108			www.csc108.com		
59					
8					
48					
010-60838888			010-60833739		
95558			www.citics.com		
60					
222		1		20 266061)	
222		1		20 266061	
0532-85022326			0532-85022605		
95548			www.citicsd.com		
61					
6009		29			

6009		29	
0755-83734659		0755-82960582	
95329		www.zszq.com.cn	
62			
9		1	
9		1	
010-63081000		010-63080978	
95321		www.cindasc.com	
63			
8		8	
023-63786633		023-63786212	
4008096096		www.swsc.com.cn	
64			
1218		1 202	
B		6	
0571-81137494		4000-766-123	
4000-766-123		www.fund123.cn	
65			
526		2 220	
1267		11	
021-20691832		021-20691861	
400-820-2899		www.erichfund.com	
66			
7650		205	
68		8 801	
021-38602377		021-38509777	
400-821-5399		www.noah-fund.com	
67			
685		37 4 449	
1118		903-906	

021-58870011	021-68596916
4007009665	www.ehowbuy.com
68	
	22 10
	22 10
021-68419822	021-20835779
400-920-0022	www.licaike.com
69	
	190 2 2
	195 3C 7
021-54509998	021-64385308
400-1818-188	fund.eastmoney.com
70	
	88 9 15 1809
	88 SOHO C 1809
010-52855713	010-85894285
4006099400	www.yixinfund.com
71	
	1 903
	7 2 2
0571-88911818	0571-86800423
4008-773-772	www.5ifund.com
72	
	100 19
	100 19
021-33323999-5611	021-33323830
4008202819	www.chinapnr.com
73	
	1333 14 09
	1333 14

021-20665952	021-22066653
4008219031	www.lufunds.com
74	
359	B 4 A506
1386	15
021-22267943	021-22268089
400-928-2266	www.dtfortune.com
75	
	277 3 310
518 8 3	
021-52822063	021-52975270
400-046-6788	www.66zichan.com
76	
1217 16 B	
1217 6	
021-80133597	021-80133413
4008081016	www.fundhaiyin.com
77	
765	602-115
1	4
021-80365020	021-63332523
4006433389	www.vstonewealth.com
78	
5475	1033
91 61 10	12
86-021-50583533	86-021-50583633
400-921-7755	http://a.leadfund.com.cn/
79	
6	105 -3491
1	12 B1201-1203
020-89629012	020-89629011

020-89629066	www.yingmi.cn
80	
11 11 1108	
11 11 1108	
010-56282140	010-62680827
400-619-9059	www.hcjijin.com
81	
687 1 2 268	
33 B 8	
010-88066632	010-88066552
4008175666	www.amcfortune.com
3	
http://www.sse.com.cn	

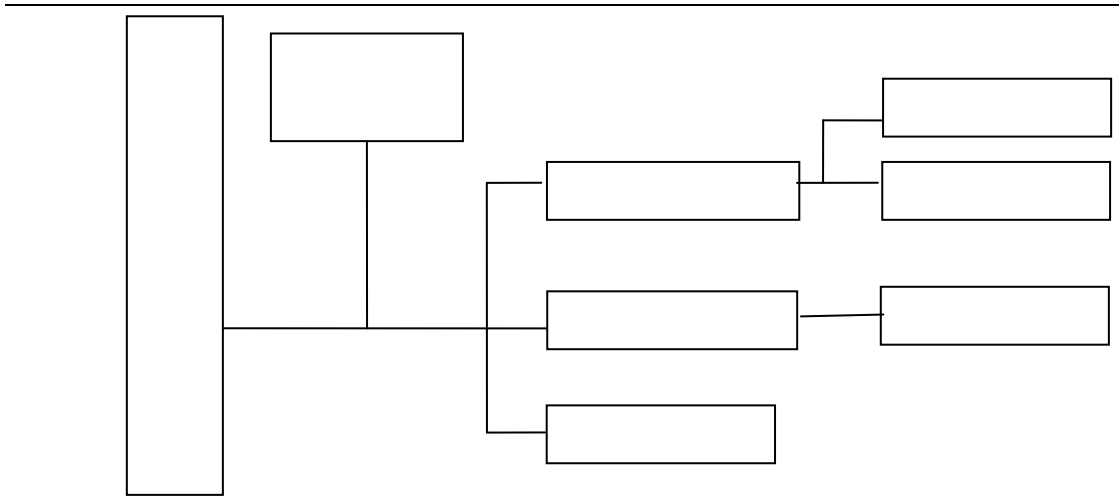
	17	256 1405	1 2 8
	17	256 1405	1266 50
			()
	010-59378856	021-51150298	021-22122888
	010-59378907	021-51150398	021-62881889



A

1

SAA



1

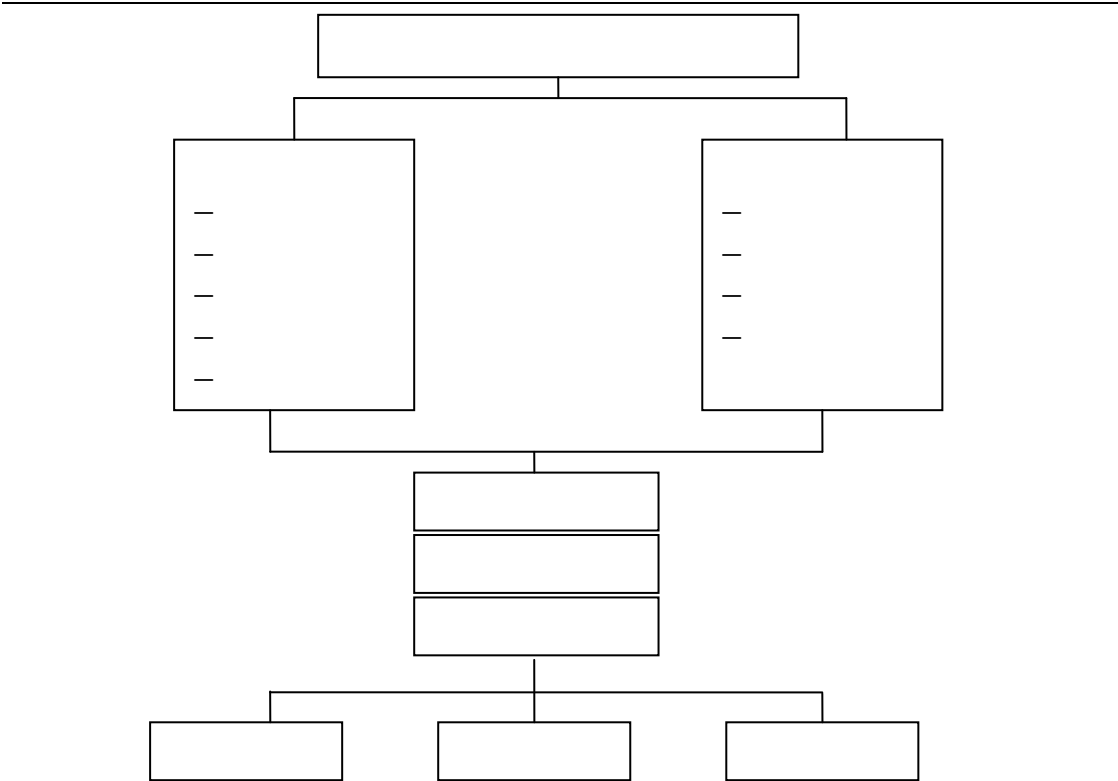
1

30-80%

15-65%

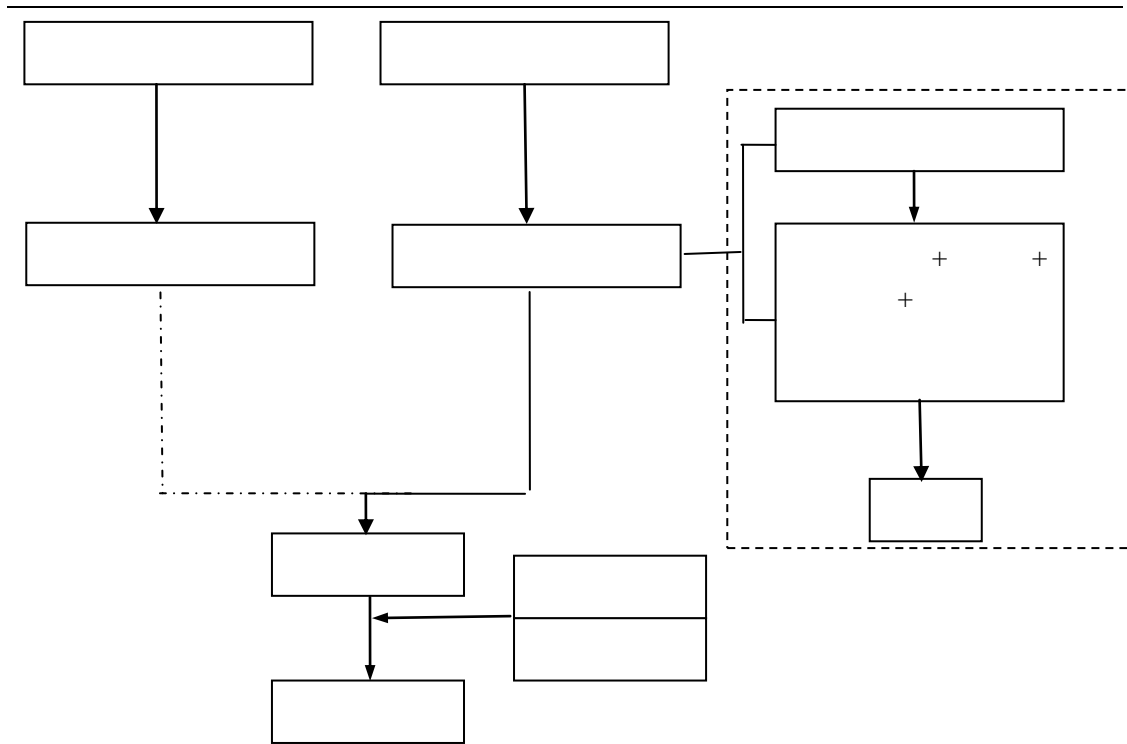
5%

2



2

1



A

B

1

2

C

2

A

B

	%	
	40	A 40 A- 35 B+ 30 B 25 B- 15 C+ 10 C 5
P/E	15	
P/B	5	
	15	
	5	
	15	
	5	
	100	100

3

A



D

3

1



A

B

C

D

2

3

4

800

2017 7

2017 3 31

		()	%
1		253,168,653.11	54.43

		253,168,653.11	54.43
2		-	-
3		68,582,564.40	14.75
		68,582,564.40	14.75
		-	-
4		-	-
5		-	-
6		-	-
		-	-
7		142,623,048.18	30.66
8		741,089.92	0.16
9		465,115,355.61	100.00

1

			%
A		-	-
B		-	-
C		102,593,438.34	22.58
D		-	-
E		16,758,444.92	3.69
F		42,536,288.00	9.36
G		102,044.25	0.02
H		-	-
I		79,131.20	0.02
J		71,719,215.32	15.79
K		19,316,436.00	4.25
L		-	-
M		16,930.16	0.00

N		46,724.92	0.01
O		-	-
P		-	-
Q		-	-
R		-	-
S		-	-
		253,168,653.11	55.73

2

					%
1	601933		7,720,400	42,462,200.00	9.35
2	601377		4,973,152	38,094,344.32	8.39
3	600309		1,355,000	36,734,050.00	8.09
4	601901		4,146,100	33,624,871.00	7.40
5	600340		708,600	19,316,436.00	4.25
6	600166		5,431,400	17,760,678.00	3.91
7	000018		1,613,300	16,584,724.00	3.65
8	002007		392,300	14,044,340.00	3.09
9	002045		600,000	9,480,000.00	2.09
10	603808		286,900	9,088,992.00	2.00

			%
1			
2			
3			

5			
6			
7		68,582,564.40	15.10
8		-	-
9		-	-
10		68,582,564.40	15.10

					%
1	110031		341,720	35,368,020.00	7.79
2	110030		309,030	33,214,544.40	7.31

1

2

1

2

3

1

601377

2016 7 8

2016 70

IPO

2012

601901

2016 11 28

[2016]129

2012 2014

2

3

1		443,021.72
2		-
3		-
4		191,623.41
5		106,444.79
6		-
7		-
8		-
9		741,089.92

4

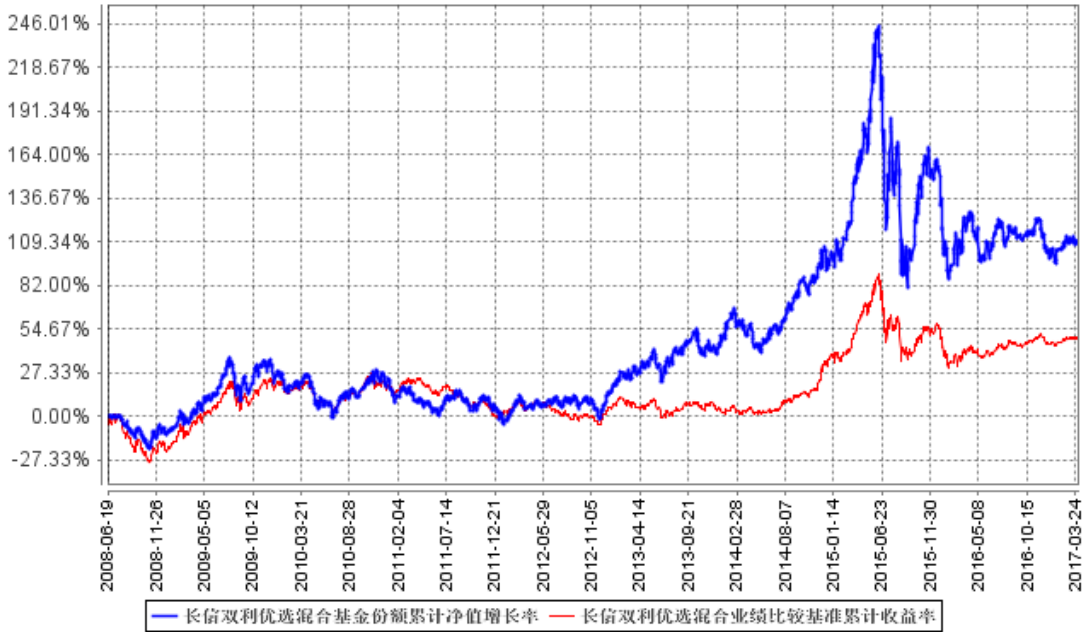
				%
1	110031		35,368,020.00	7.79
2	110030		33,214,544.40	7.31

5

6

						-	-
2008 6 19 2008 12 31	-11.20%	1.36%	-21.85%	1.85%	10.65%	-0.49%	
2009	43.94%	1.47%	55.78%	1.23%	-11.84%	0.24%	
2010	-4.15%	1.35%	-2.51%	0.95%	-1.64%	0.40%	
2011	-14.63%	0.99%	-15.70%	0.80%	1.07%	0.19%	
2012	10.79%	1.09%	5.35%	0.79%	5.44%	0.30%	
2013	24.86%	1.22%	0.33%	0.82%	24.53%	0.40%	
2014	36.32%	1.18%	29.37%	0.69%	6.95%	0.49%	
2015	27.12%	2.76%	13.38%	1.50%	13.74%	1.26%	
2016	-20.24%	1.71%	-6.30%	0.91%	-13.94%	0.80%	
2017 1 1 2017 3 31	4.27%	0.80%	2.36%	0.33%	1.91%	0.47%	

2008 6 19 2017 3 31



1 2008 6 19 2017 3 31

2 6



1

1

2

3

4

5

6

7

8

2

1

1.5%

H E 1.5%

H

E

3

2

0.25%

H=E 0.25%

H

E

3

3

1.

3

8

3

4

3

1

M	
M 100	1.5%

100 M 500	1.0%
500 M	1000

M

N	
N 1	1.8%
1 N 3	1.2%
3 N 5	0.6%
5 N	0

N

2

N	
N 1	0.5%
1 N 2	0.2%
2 N	0

N

3

A B

A 519999 B 519998

519997 519995

519993 C C 519989

A A 519985

A A 519983



2017 6 30

2017 7 4

[2009]32

2010 4 23

1

2

1

(-)

2

)



(1.00)
3

(1.00
4

2

5

6

25%

75%

,

,

1

